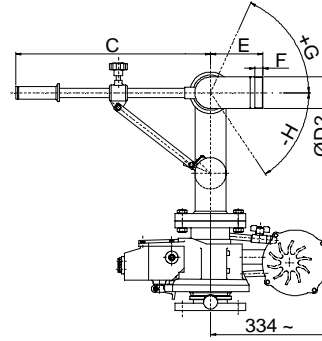
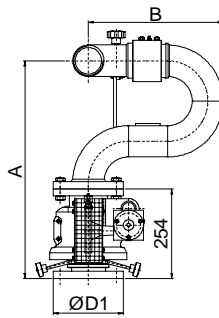


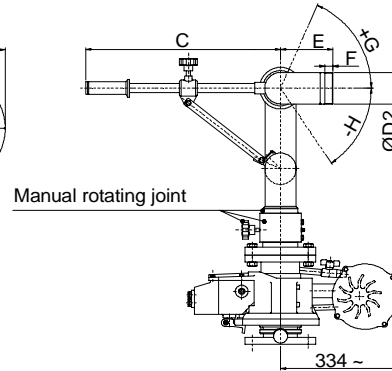
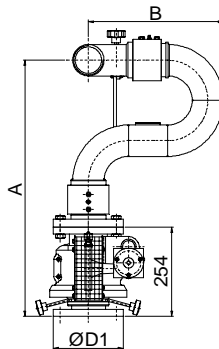
MODEL FOL 2,5

MODEL FOL 3



MODEL FOL S2,5

MODEL FOL S3



Dimensions in mm

CONSTRUCTION FEATURES

Body material: stainless steel AISI 316

Joints material: stainless steel AISI 316, phosphor bronze balls mounted with greasers

UNI/DIN or ANSI flange material: carbon steel

Design pressure: 16 bar

Minimum working pressure: 2,5 bar

Maximum working pressure (advised): 12 bar

Rotation angle: adjustable from 15° to 360°

Rotation speed at 7 bar: 4°/sec

Horizontal movement is produced by a water driven turbine that causes the oscillation of the apparatus

Finish: red epoxy paint (RAL 3000)

OPTIONAL

Inlet flange material: stainless steel AISI 316

Different inlet flange sizes

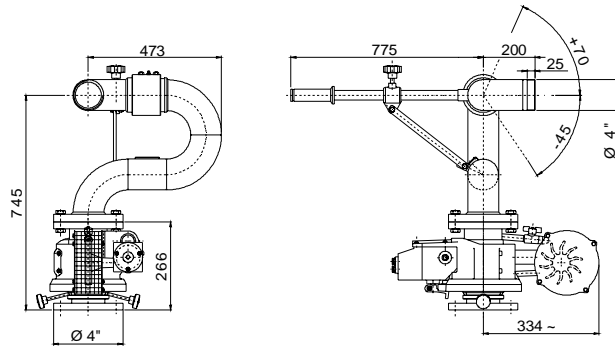
Elevation angle: +85°

Hydraulic and/or functional test witnessed

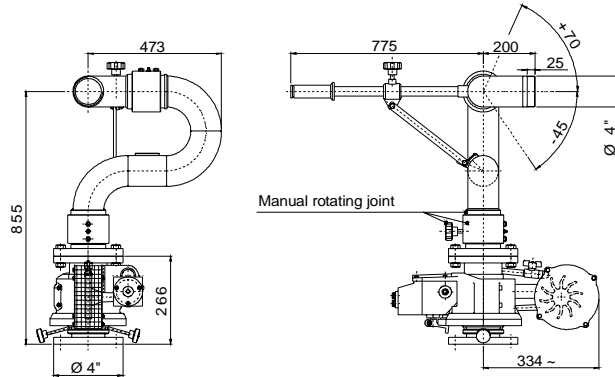
MODEL	A	B	C	ØD1	ØD2 BSP	E	F	G	H
FOL 2,5	560 mm	330 mm	360 mm	3"	3"	145 mm	21 mm	85°	45°
FOL 3	654 mm	330 mm	360 mm	3"	3"	145 mm	21 mm	85°	45°
FOL S2,5	620 mm	385 mm	640 mm	4"	4"	150 mm	23 mm	70°	45°
FOL S3	730 mm	385 mm	640 mm	4"	4"	150 mm	23 mm	70°	45°

MODEL	Ø BODY SIZE	MAXIMUM FLOW RATE	WATER CONSUMPTION	WEIGHT
FOL 2,5	2 ½"	2000 l/min	25l/min at 7 bar	34 kg
FOL 3	2 ½"	2000 l/min	25l/min at 7 bar	35 kg
FOL S2,5	3"	4000 l/min	25l/min at 7 bar	37 kg
FOL S3	3"	4000 l/min	25l/min at 7 bar	39 kg

MODEL FOL 4



MODEL FOL S4



Dimensions in mm

CONSTRUCTION FEATURES

Body material: stainless steel AISI 316

Joints material: stainless steel AISI 316, phosphor bronze balls mounted with greasers

UNI/DIN or ANSI flange material: carbon steel

Design pressure: 16 bar

Minimum working pressure: 2,5 bar

Maximum working pressure (advised): 12 bar

Rotation angle: adjustable from 15° to 360°

Rotation speed at 7 bar: 4°/sec

Horizontal movement is produced by a water driven turbine that causes the oscillation of the apparatus

Finish: red epoxy paint (RAL 3000)

OPTIONAL

Inlet flange material: stainless steel AISI 316

Different inlet flange sizes

Elevation angle: +85°

Hydraulic and/or functional test witnessed

MODEL	Ø BODY SIZE	MAXIMUM FLOW RATE	WATER CONSUMPTION at 7 bar	WEIGHT
FOL 4	4"	7000 l/min	25l/minr	48 kg
FOL S4	4"	7000 l/min	25l/minr	50 kg

In Norse myth, Vidar is the son of Odin and the giantess Grid (Gridr). He is the god of silence and revenge, the second strongest of the gods. At the destruction of the world, Odin will be killed by the wolf Fenrir, and Vidar will avenge his father by killing the wolf with his bare hands. He will press one foot on Fenrir's bottom jaw, and will take hold of his other jaw and tear the wolf apart. He is one of the gods that will rule the new world when it is created. His hall in Asgard is Vidi.