



**QUALITY PRODUCTS FROM FOMTEC FOR HIGHER SAFETY AND  
BETTER PERFORMANCE**

## Ymer Bladdertanks

**The Ymer bladdertank series consists of vertical tanks from 200 to 12000 liter and horizontal tanks from 1000 to 12000 liter.**

The data below show tanks with pre-piping and proportioner, in order to visualize how configurations, measurements etc can be. Standard shipping configuration is how ever plain tank with no pre piping or proportioner unless this is ordered specifically. The specific configuration desired must be indicated at order giving data about flowrates, proportioning ratio and pressure conditions etc.

### **CONSTRUCTION FEATURES**

Construction code: I.S.P.E.S.L.

Design pressure: 12 bar

Maximum working pressure: 12 bar

Test pressure (tank): 17.2 bar

Design temperature (\*): -10°C +50°C (+65°C)

Body material: carbon steel ASTM A 516 gr.70 or others

Flanges material: carbon steel (ASTM A 105)

Pipe material: carbon steel (ASTM A 106 gr. B)

Cut-off ball valves material: carbon steel (body), AISI 316 (ball)

Filling valve, drain valve, level indicators material: nickel plated brass

Pressure gauges material: stainless steel

Safety valve material: brass

Water and concentrate foam diaphragms material: AISI 316 stainless steel

Bladder material: hypalon-neoprene / Nylon

Name plate material: aluminum

Finish: red epoxy paint (RAL 3000)

Flow direction: right (from left to right)

Packing: body, pallet.

(\*) The design temperature is reference only for the dimensioning of tank. If the proportioning system is constantly under pressure, the temperature of water and concentrate inside of the tank must be under the value of 30°C

### **OPTIONAL**

ASME or TÜV code

Different design, working and test pressures to the standard value

Different design temperature to the standard values

Corrosion allowance

Fill pump with hoses

Left flow direction (from right to left)

Alternate materials and parts (diff. to the standard value)

X-ray weld test or dye penetrate check

Different finish specifications

Hydraulic and/or functional test witnessed

I.S.P.E.S.L. certification

Special packing

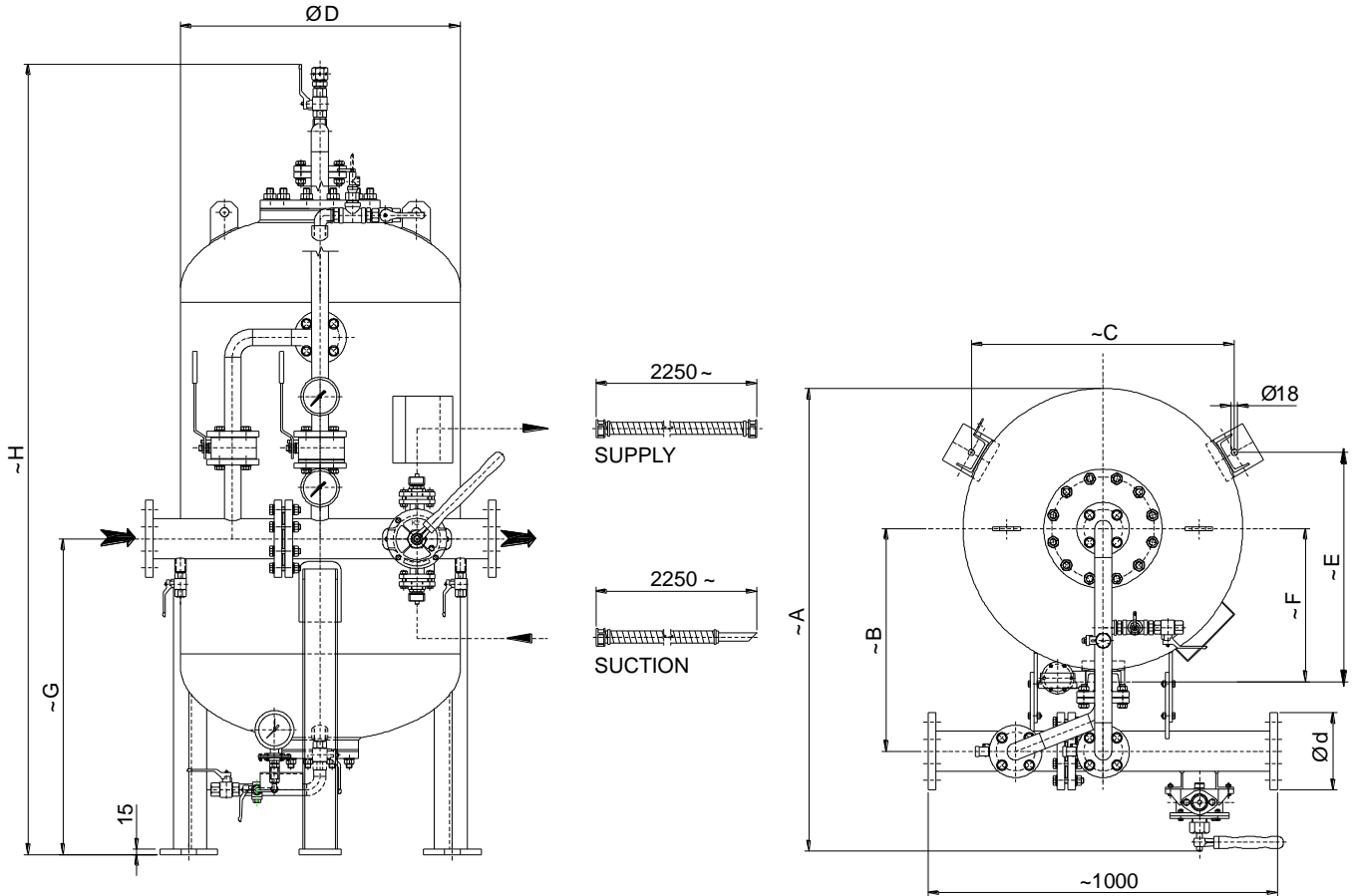
### **STANDARD DOCUMENTATION**

Warranty certificate

Hydraulic pressure test certificate

Operating, filling and maintenance manual (English)

**YMER L VERTICAL BLADDERTANK 200-600 ltr**



**CONSTRUCTION FEATURES**

Mixer data: see mixer data sheet

P&I diagram and parts are shown on Ymer Tech data sheet

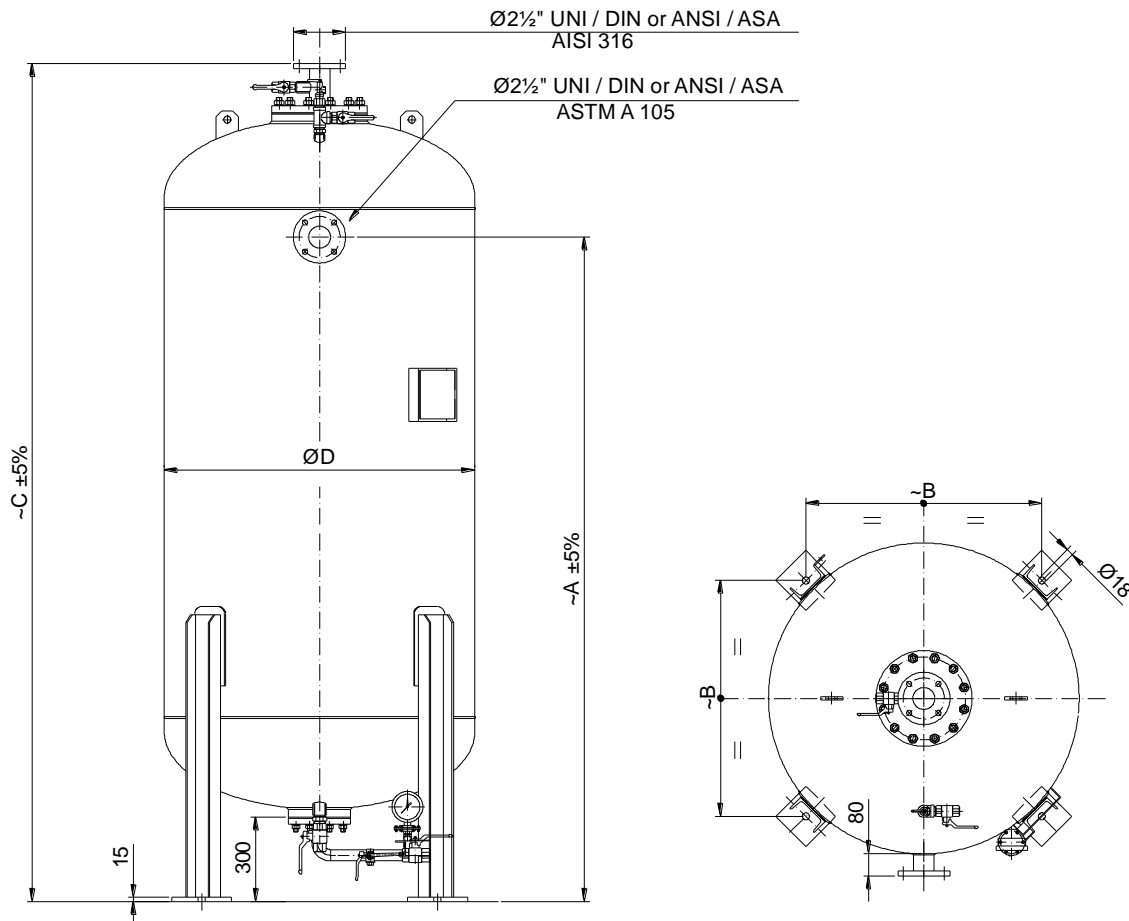
MODEL	Mixer 2 1/2"			Mixer 3"			Mixer 4"		
	Ø d	A	B	Ø d	A	B	Ø d	A	B
PL 200 litres	2 1/2"	1085 mm	515 mm	3"	1100 mm	525 mm	4"	1125 mm	535 mm
PL 400 litres	2 1/2"	1085 mm	515 mm	3"	1100 mm	525 mm	4"	1125 mm	535 mm
PL 600 litres	2 1/2"	1285 mm	615 mm	3"	1300 mm	625 mm	4"	1325 mm	635 mm

MODEL	C	Ø D	E	F	G	H	WEIGHT *)
PL 200 litres	580,5 mm	600 mm	502,5 mm	335 mm	700 mm	1725 mm	150 kg
PL 400 litres	580,5 mm	600 mm	502,5 mm	335 mm	900 mm	2275 mm	170 kg
PL 600 litres	755,5 mm	800 mm	654,5 mm	436 mm	900 mm	2155 mm	200 kg

\*) The table shows the approximate weight of proportioning system without mixer. The mixer weight must be added

to obtain the total weight. The proportioning system are considered standard (I.S.P.E.S.L. construction code, 12 bar design pressure, etc).

**Model YMER S VERTICAL BLADDER TANK 1000-2000 ltr**



Dimensions in mm

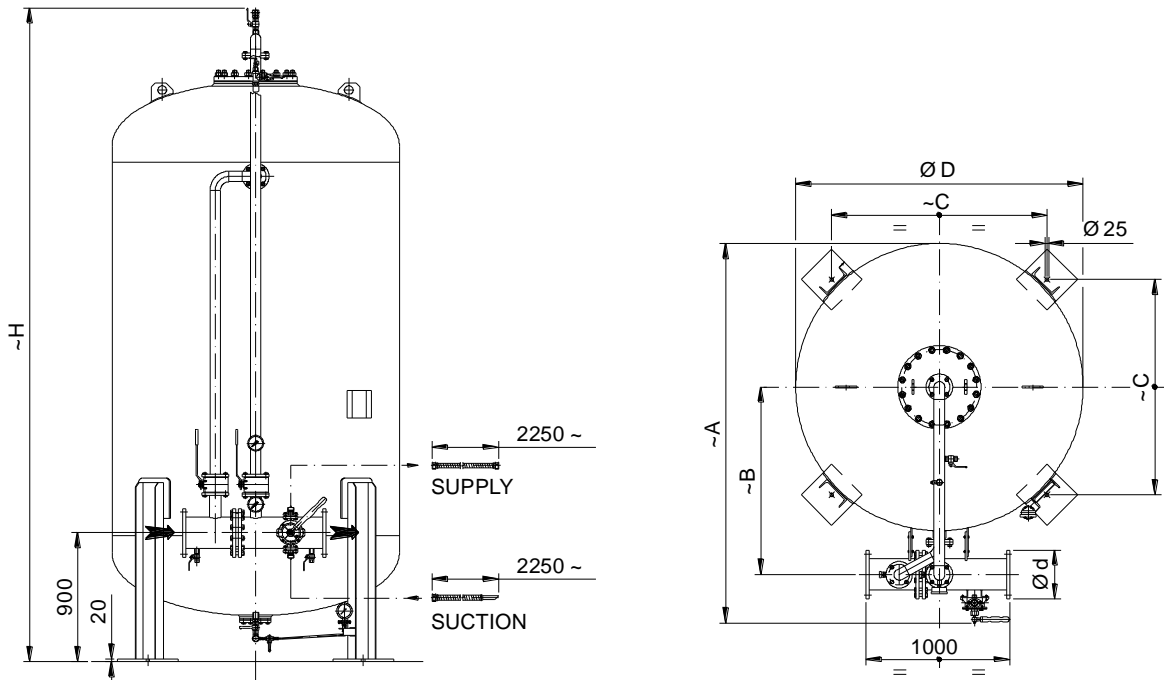
**CONSTRUCTION FEATURES**

The bladder tanks are considered standard (I.S.P.E.S.L. construction code, 12 bar design pressure, etc)

P&I diagram and parts are shown on Ymer Tech data sheet

MODEL	A	B	C	$\varnothing D$	WEIGHT
S 1000	1485 mm	765 mm	2075 mm	1000 mm	310 kg
S 1500	2140 mm	765 mm	2725 mm	1000 mm	370 kg
S 2000	2290 mm	835 mm	2875 mm	1100 mm	520 kg

**YMER V VERTICAL BLADDERTANK 2500-12000 ltr**



**CONSTRUCTION FEATURES**

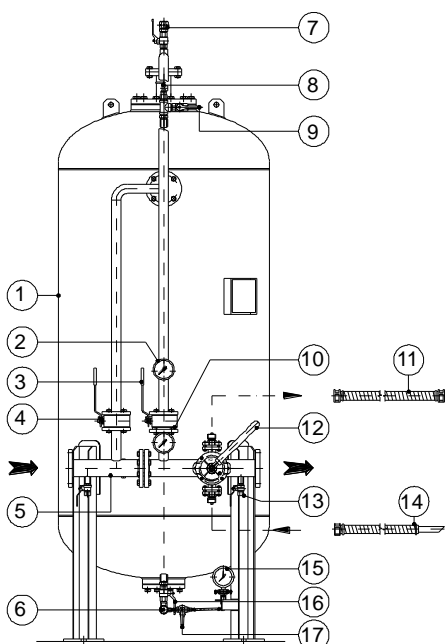
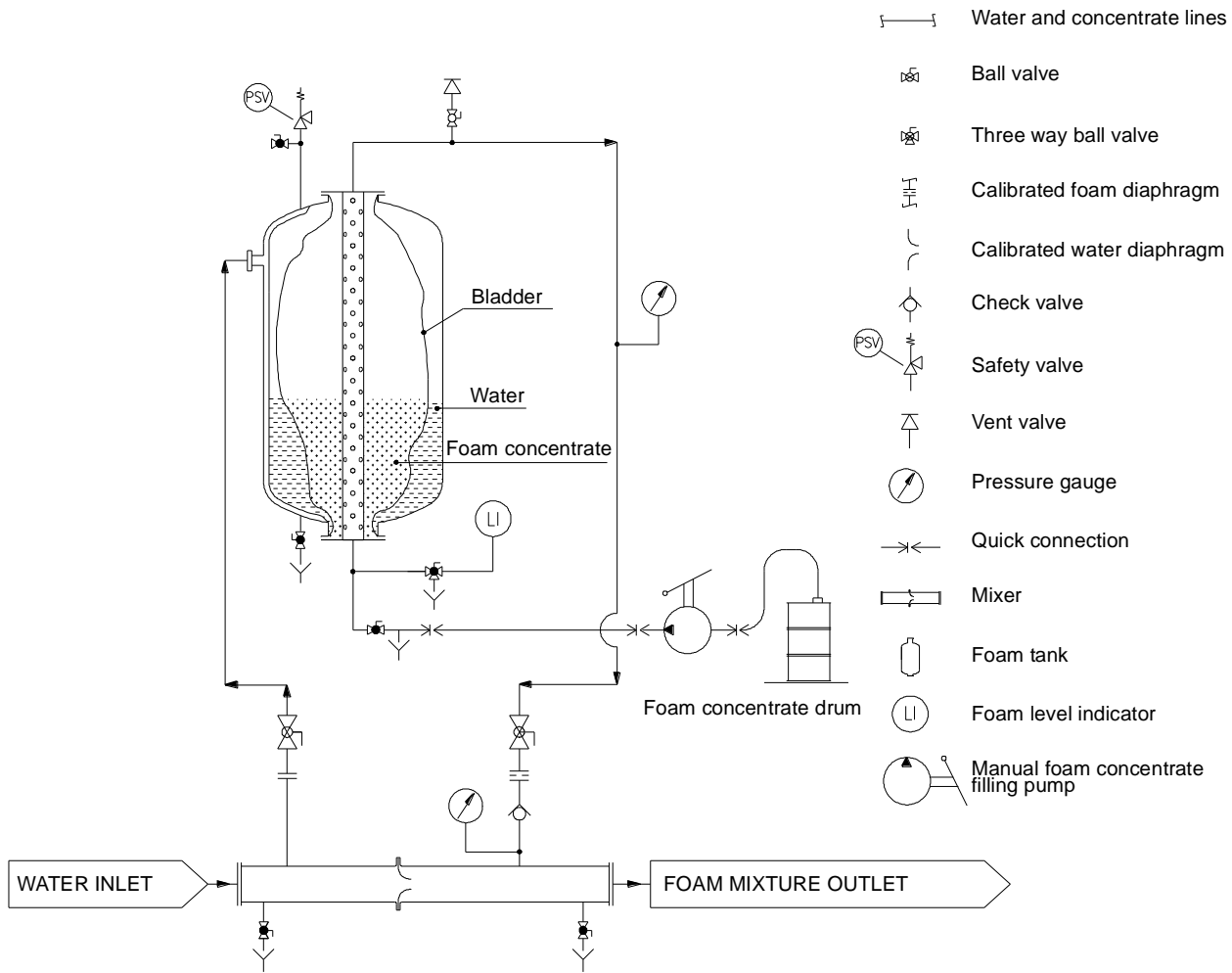
Mixer data: see mixer data sheets

P&I diagram and parts are shown below

MODEL	Mixer 3"			Mixer 4"			Mixer 6"			Mixer 8"		
	Ø d	A	B	Ø d	A	B	Ø d	A	B	Ø d	A	B
V 2500	3"	1710 mm	835 mm	4"	1735 mm	845 mm	6"	1790 mm	875 mm	8"	1835 mm	895 mm
V 3000	3"	1810 mm	885 mm	4"	1835 mm	895 mm	6"	1890 mm	925 mm	8"	1935 mm	945 mm
V 3500	3"	1910 mm	935 mm	4"	1935 mm	945 mm	6"	1990 mm	975 mm	8"	2035 mm	995 mm
V 4000	3"	1960 mm	960 mm	4"	1985 mm	970 mm	6"	2040 mm	1000 mm	8"	2090 mm	1025 mm
V 4500	3"	2010 mm	985 mm	4"	2035 mm	995 mm	6"	2090 mm	1025 mm	8"	2140 mm	1050 mm
V 5000	3"	2110 mm	1035 mm	4"	2135 mm	1045 mm	6"	2190 mm	1075 mm	8"	2245 mm	1105 mm
V 5500	3"	2110 mm	1035 mm	4"	2135 mm	1045 mm	6"	2190 mm	1075 mm	8"	2245 mm	1105 mm
V 6000	3"	2260 mm	1110 mm	4"	2285 mm	1120 mm	6"	2340 mm	1150 mm	8"	2395 mm	1180 mm
V 6500	3"	2310 mm	1135 mm	4"	2335 mm	1145 mm	6"	2395 mm	1180 mm	8"	2445 mm	1205 mm
V 7000	3"	2510 mm	1235 mm	4"	2535 mm	1245 mm	6"	2595 mm	1280 mm	8"	2645 mm	1305 mm
V 7500	3"	2510 mm	1235 mm	4"	2535 mm	1245 mm	6"	2595 mm	1280 mm	8"	2645 mm	1305 mm
V 8000	3"	2510 mm	1235 mm	4"	2535 mm	1245 mm	6"	2595 mm	1280 mm	8"	2645 mm	1305 mm
V 8500	3"	2510 mm	1235 mm	4"	2535 mm	1245 mm	6"	2595 mm	1280 mm	8"	2645 mm	1305 mm
V 9000	3"	2510 mm	1235 mm	4"	2535 mm	1245 mm	6"	2595 mm	1280 mm	8"	2645 mm	1305 mm
V 10000	3"	2510 mm	1235 mm	4"	2535 mm	1245 mm	6"	2595 mm	1280 mm	8"	2645 mm	1305 mm
V 11000	3"	2510 mm	1235 mm	4"	2535 mm	1245 mm	6"	2595 mm	1280 mm	8"	2645 mm	1305 mm
V 12000	3"	2510 mm	1235 mm	4"	2535 mm	1245 mm	6"	2595 mm	1280 mm	8"	2645 mm	1305 mm

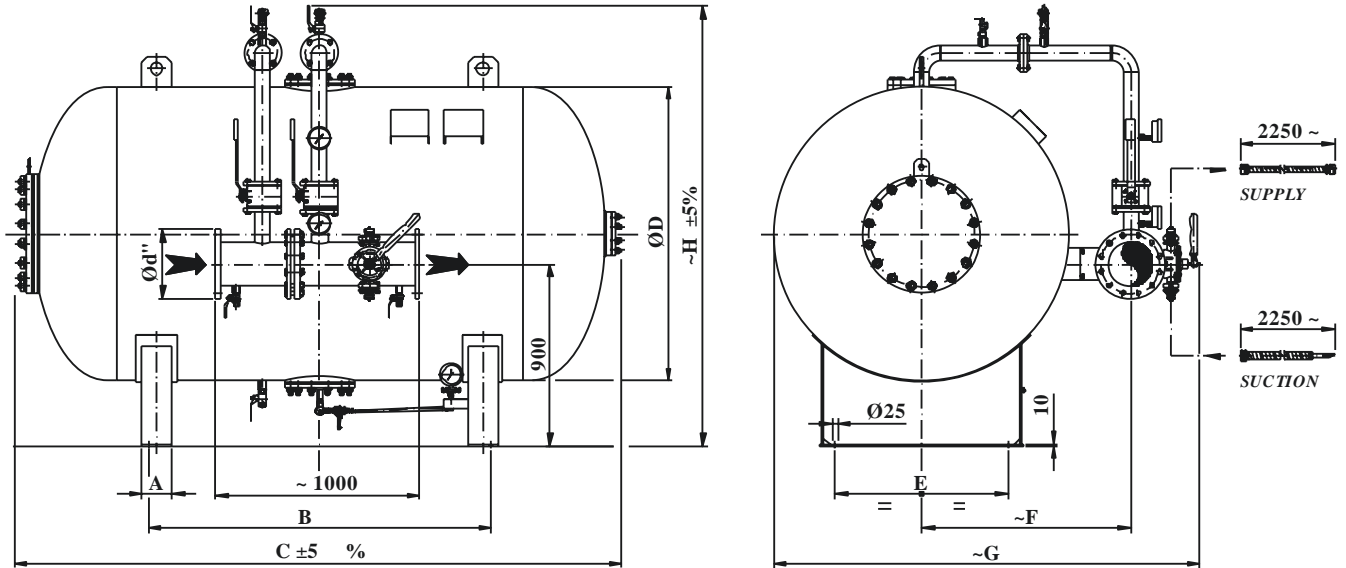
MODEL	C	Ø D	H	WEIGHT *)
V 2500	920 mm	1200 mm	3375 mm	800 kg
V 3000	995 mm	1300 mm	3550 mm	950 kg
V 3500	1065 mm	1400 mm	3615 mm	1080 kg
V 4000	1100 mm	1450 mm	3745 mm	1115 kg
V 4500	1135 mm	1500 mm	3755 mm	1260 kg
V 5000	1210 mm	1600 mm	3725 mm	1365 kg
V 5500	1210 mm	1600 mm	3975 mm	1445 kg
V 6000	1315 mm	1750 mm	3805 mm	1655 kg
V 6500	1350 mm	1800 mm	3835 mm	1715 kg
V 7000	1500 mm	2000 mm	3545 mm	2000 kg
V 7500	1500 mm	2000 mm	3695 mm	2075 kg
V 8000	1500 mm	2000 mm	3895 mm	2180 kg
V 8500	1500 mm	2000 mm	4045 mm	2255 kg
V 9000	1500 mm	2000 mm	4195 mm	2335 kg
V 10000	1500 mm	2000 mm	4545 mm	2520 kg
V 11000	1500 mm	2000 mm	4845 mm	2680 kg
V 12000	1500 mm	2000 mm	5195 mm	2680 kg

\*) The table shows the approximate weight of proportioning system without mixer. The mixer weight must be added to obtain the total weight. The proportioning system are considered standard (I.S.P.E.S.L. construction code, 12 bar design pressure, etc).



- |  |   |
|--|---|
| 1. Tank                                  | 9. Water vent valve                         |
| 2. Tank pressure gauge                   | 10. Check valve                             |
| 3. Concentrate cut-off valve             | 11. Hose                                    |
| 4. Water cut-off valve                   | 12. Fill pump                               |
| 5. Mixer                                 | 13. Mixer drain valves                      |
| 6. Concentrate filling/drain valve       | 14. Hose                                    |
| 7. Concentrate vent valve/overflow valve | 15. Concentrate level indicator             |
| 8. Safety valve                          | 16. Water drain valve                       |
|  | 17. Concentrate level indicator drain valve |

**YMER H HORIZONTAL BLADDERTANK 1000-12000 ltr**



**CONSTRUCTION FEATURES**

Construction features and more information are shown on Ymer technical information sheet

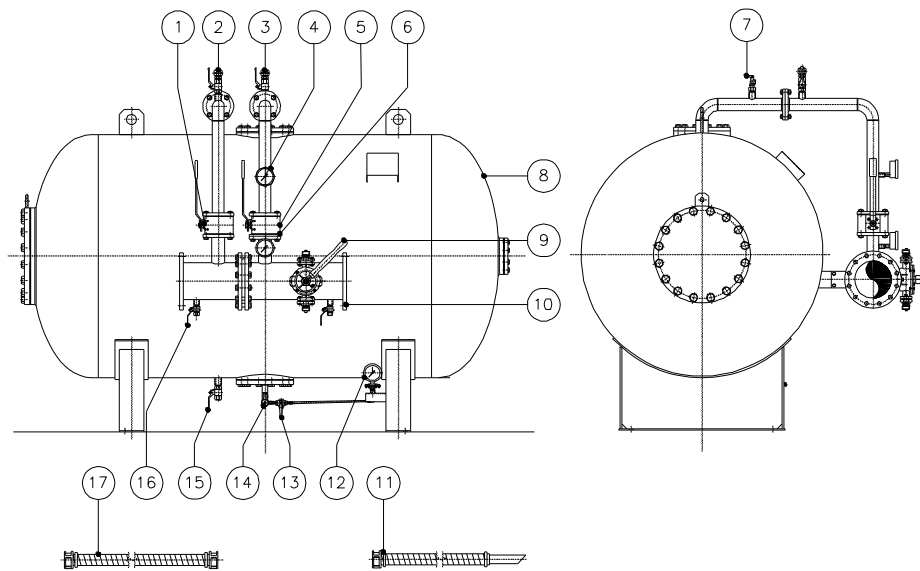
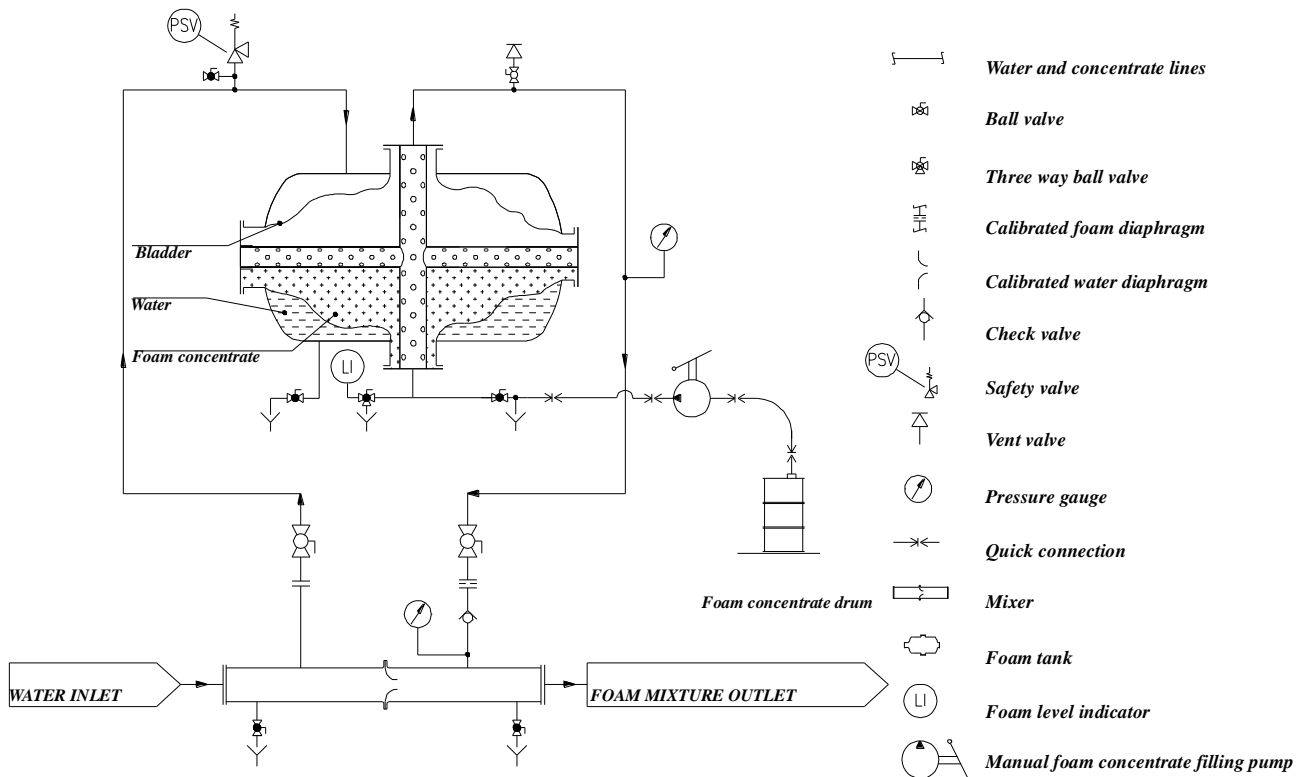
Mixer data: see mixer data sheets

P&I diagram and parts are shown below

Model	Mixer 3"			Mixer 4"			Mixer 6"			Mixer 8"		
	Ø d	F	G	Ø d	F	G	Ø d	F	G	Ø d	F	G
	mm	mm	mm	mm	mm	mm	mm	mm	mm	mm	mm	mm
H 1000	3"	735	1510	4"	745	1535	6"	775	1590	8"	795	1635
H 1250	3"	735	1510	4"	745	1535	6"	775	1590	8"	795	1635
H 1500	3"	735	1510	4"	745	1535	6"	775	1590	8"	795	1635
H 1750	3"	785	1610	4"	795	1635	6"	825	1690	8"	845	1735
H2000	3"	785	1610	4"	795	1635	6"	825	1690	8"	845	1735
H 2500	3"	835	1710	4"	845	1735	6"	875	1790	8"	895	1835
H 3000	3"	885	1810	4"	895	1835	6"	925	1890	8"	945	1935
H 3500	3"	935	1910	4"	945	1935	6"	975	1990	8"	995	2035
H 4000	3"	960	1960	4"	970	1985	6"	1000	2040	8"	1025	2090
H 4500	3"	985	2010	4"	995	2035	6"	1025	2090	8"	1050	2140
H 5000	3"	1035	2110	4"	1045	2135	6"	1075	2190	8"	1105	2245
H 5500	3"	1035	2110	4"	1045	2135	6"	1075	2190	8"	1105	2245
H 6000	3"	1110	2260	4"	1120	2285	6"	1150	2340	8"	1180	2395
H 6500	3"	1135	2310	4"	1145	2335	6"	1180	2395	8"	1205	2445
H 7000	3"	1235	2510	4"	1245	2535	6"	1280	2595	8"	1305	2645
H 7500	3"	1235	2510	4"	1245	2535	6"	1280	2595	8"	1305	2645
H 8000	3"	1235	2510	4"	1245	2535	6"	1280	2595	8"	1305	2645
H 8500	3"	1235	2510	4"	1245	2535	6"	1280	2595	8"	1305	2645
H 9000	3"	1235	2510	4"	1245	2535	6"	1280	2595	8"	1305	2645
H 10000	3"	1235	2510	4"	1245	2535	6"	1280	2595	8"	1305	2645
H 11000	3"	1235	2510	4"	1245	2535	6"	1280	2595	8"	1305	2645
H 12000	3"	1235	2510	4"	1245	2535	6"	1280	2595	8"	1305	2645

MODEL	A mm	B mm	C mm	Ø D mm	E mm	H mm	WEIGHT Kg (*)
H 1000	120	820	1630	1000	600	1755	550
H 1250	120	1070	1930	1000	600	1755	585
H 1500	120	1360	2280	1000	600	1755	630
H 1750	120	1220	2190	1100	700	1855	705
H 2000	120	1520	2490	1100	700	1855	755
H 2500	150	1560	2630	1200	800	1955	880
H 3000	150	1680	2810	1300	800	2055	1030
H 3500	150	1680	2870	1400	850	2155	1155
H 4000	150	1680	3020	1450	850	2205	1205
H 4500	150	1780	3020	1500	850	2255	1360
H 5000	200	1680	2980	1600	950	2355	1480
H 5500	200	1910	3230	1600	950	2355	1585
H 6000	200	1680	3060	1750	1050	2505	1805
H 6500	200	1680	3090	1800	1050	2555	1865
H 7000	250	1250	2800	2000	1350	2755	2150
H 7500	250	1400	2950	2000	1350	2755	2225
H 8000	250	1600	3150	2000	1350	2755	2325
H 8500	250	1750	3300	2000	1350	2755	2405
H 9000	250	1900	3450	2000	1350	2755	2480
H 10000	250	2250	3800	2000	1350	2755	2660
H 11000	250	2550	4100	2000	1350	2755	2820
H 12000	250	2900	4450	2000	1350	2755	3000

\*) The table shows the approximate weight of proportioning system without mixer. The mixer weight must be added to obtain the total weight. The proportioning system are considered standard (I.S.P.E.S.L. construction code, 12 bar design pressure, etc).



- |   |                                 |                                     |
|---|---------------------------------|-------------------------------------|
| 1. Water cut-off valve                        | 7. Safety valve                 | 13. Level indicator drain valve     |
| 2. Water vent valve                           | 8. Tank                         | 14. Concentrate filling/drain valve |
| 3. Concentrate vent valve/overflow valve      | 9. Fill pump                    | 15. Water drain valve               |
| 4. Tank pressure gauge                        | 10. Mixer                       | 16. Mixer drain valves              |
| 5. Concentrate cut-off valve                  | 11. Hose                        | 17. Hose                            |
| 6. Calibrated foam diaphragm with check valve | 12. Concentrate level indicator |                                     |